

Local Authority Enforcement Monitoring System

An Overview of the Check Business Rules Process

Version History.

Version No.	Date	Synopsis
1.0	16/01/2009	First distribution
2.0	29/03/2012	Removal of references to animal feed and primary production.

Table of Contents

<u>Overview</u>	<u>3</u>
<u>Error Messages</u>	<u>4</u>
<u>The Business Rules</u>	<u>5</u>
<u>Examples of errors and suggested action</u>	<u>7</u>

Overview

This document sets out the business rules which need to be checked prior to the data being signed-off. The process to check data against the business rules can be selected via the Check/Sign-off drop-down menu (see fig 1 below):

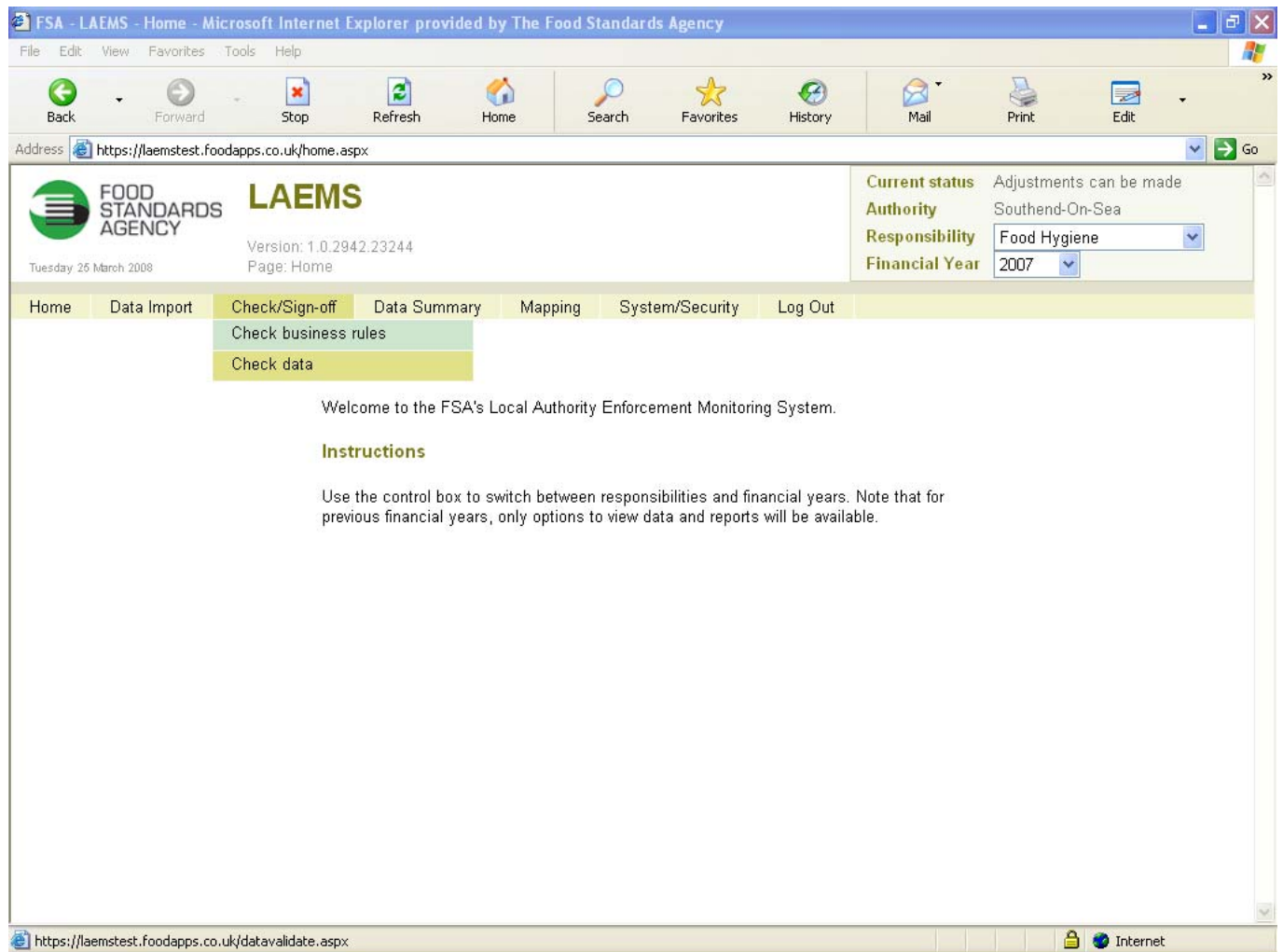


Fig 1 – selecting the check business rules process.

The process to check data against the business rules may be run as many times as is necessary.

Error Messages

If any of the business rules are failed, you will receive error messages (see fig 2 below):

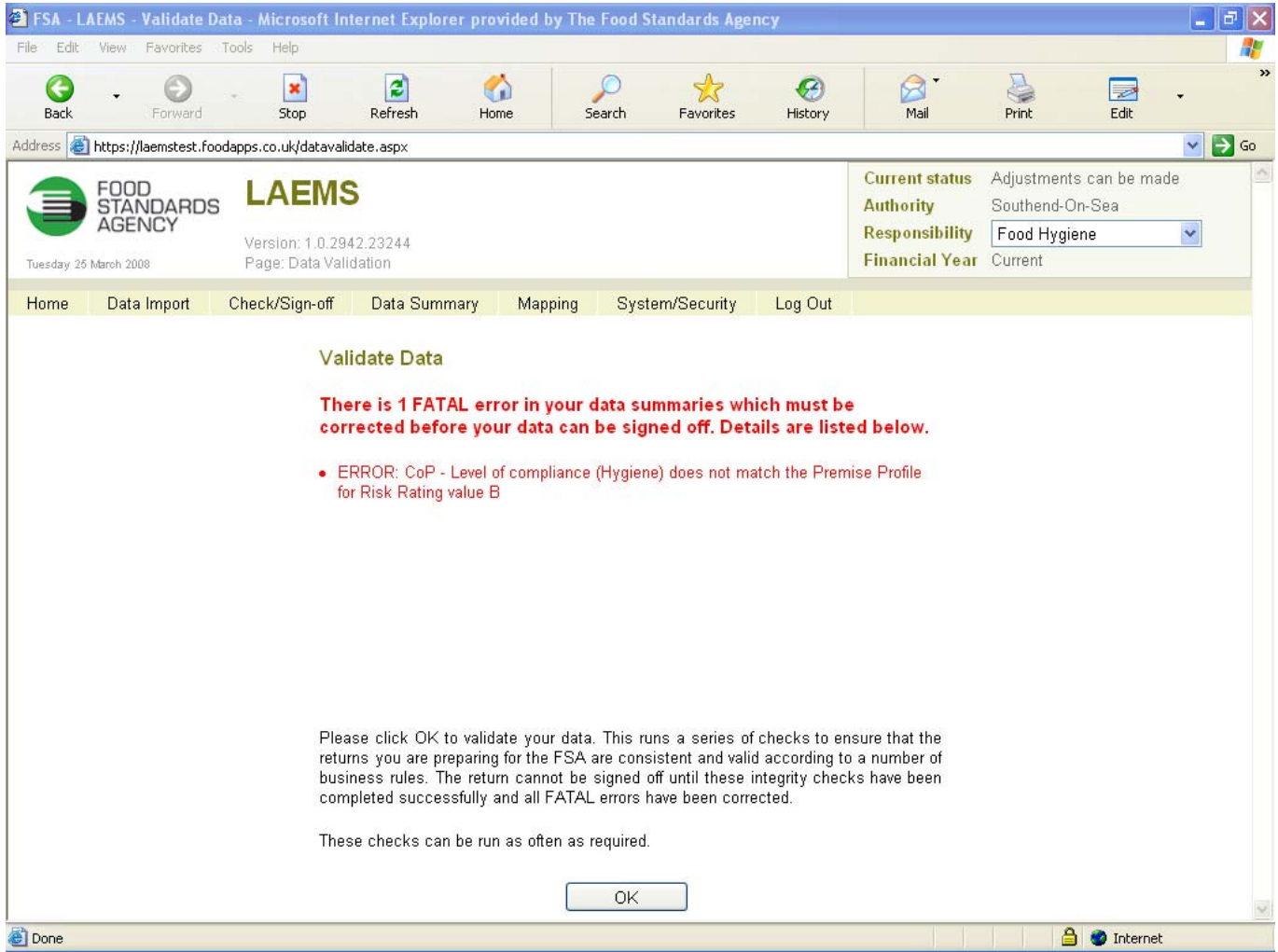


Fig 2 – examples of error messages

The error messages are split into 2 categories:

FATAL ERRORS – these are errors which must be addressed before you are able to sign-off the data.

WARNING ERRORS – these are areas which you will wish to look at to ensure that the data supplied are correct. For example if the number of intervention achieved is greater than five times the number of premises, a warning error will result. It is entirely possible that it is correct that this number of intervention have been carried out, but a warning error will be produced in this instance to guide you to consider if this is in fact correct.

Please note: If a warning error is received and you consider that the figures are correct, this warning error will remain when the 'Check business rules' process is carried out. However, you can safely ignore this warning as you are happy that the figures are correct.

The error message in Fig 2 points to the inconsistency between the figures given on the Level of compliance (Hygiene) data summary and the B rated premises in the premises profile.

The Business Rules

The business rules are, in essence, consistency checks to ensure that the data on the monitoring return do not contain major inconsistencies.

For example, the following premises profile shows 3 B rated premises (see fig 3 below)

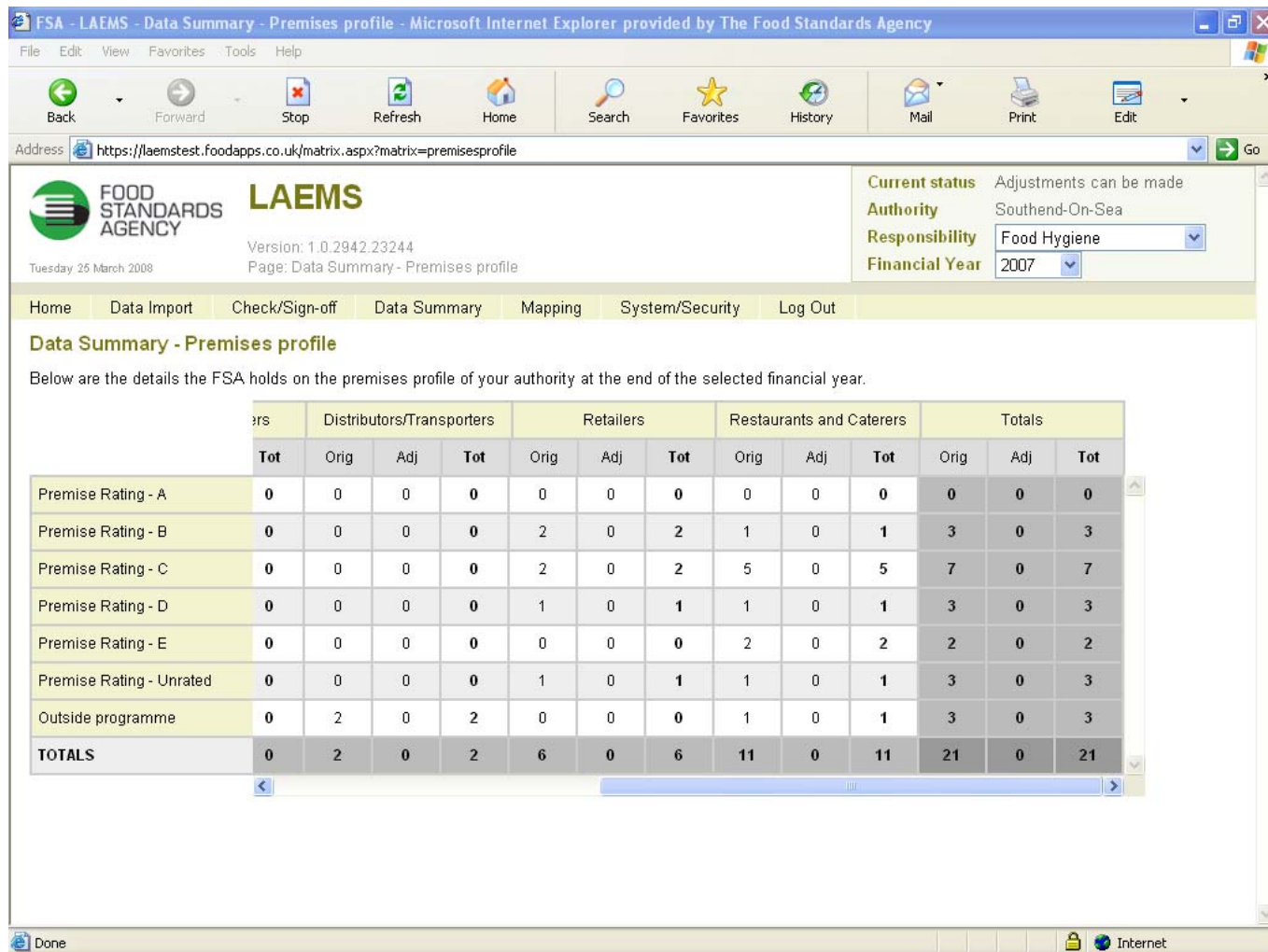


Fig 3 – premises profile

But, in the screen showing the scores for Level of Compliance (Hygiene), the number of premises rated B is showing as 8 (see fig 4 below under the 'Tot' column for B rated premises) i.e. 5 premises scoring 25, 1 scoring 15, 1 scoring 10 and 1 scoring 5

Fig 4 Level of (current) compliance (Hygiene)

This will result in the error message shown in [fig 2 \(above\)](#) as the number of B rated premises shown in the premises profile (fig 3) does not match the number of B rated premises for which scores for the Level of Compliance (Hygiene) have been supplied.

In order for the data to pass the business checks, this inconsistency must be addressed.

Why might there be inconsistencies?

The main reasons for inconsistencies resulting in error messages will be:

- 1) Adjustments have been applied.
- 2) Mapping needs to be completed.

The following table gives examples of errors and the suggested action to remedy these.

Food Hygiene - Fatal Errors

Business Rule	Example of error message	Suggested remedial action
The number of premises for each risk rating shown in the premises profile screen must be the same as those in the Level of Compliance (Hygiene) screen	ERROR: CoP - Level of compliance (Hygiene) does not match the Premise Profile for Risk Rating value A	Check that all necessary mapping has been carried out, with particular focus on 'Premises types'. Secondly check any adjustments applied to the 'premises profile' and 'Level of Compliance (Hygiene)' screens
The number of premises for each risk rating shown in the premises profile screen must be the same as those in the Level of Compliance (Structure) screen	ERROR: CoP - Level of compliance (Hygiene) does not match the Premise Profile for Risk Rating value A	Check that all necessary mapping has been carried out, with particular focus on 'Premises types'. Secondly check any adjustments applied to the 'premises profile' and 'Level of Compliance (Structure)' screens
The number of premises for each risk rating shown in the premises profile screen must be the same as those in the Confidence in management screen	ERROR: CoP - Confidence in management does not match the Premise Profile for Risk Rating value A	Check that all necessary mapping has been carried out, with particular focus on 'Premises types'. Secondly check any adjustments applied to the 'premises profile' and 'Confidence in management' screens
The number of interventions shown on the screen 'Interventions carried out' must be equal to the number shown on the 'Due interventions' screen	ERROR: The total number of interventions shown by risk rating and the total number of interventions achieved by premise type show different figures	Check that all necessary mapping has been carried out, with particular focus on 'Intervention types'. Secondly check any adjustments applied to the 'premises profile' and 'Level of Compliance' screens
The number of broadly compliant premises (broadly compliant premises screen) in each risk rating must be less than or equal to the number of premises in that risk rating	ERROR: The number of Broadly Compliant premises should be fewer than or equal to the Premise Profile count for Risk Rating value B	Check adjustments on the 'broadly compliant' screen and ensure that any additional broadly compliant premises are reflected by premises type in the premises profile screen

Food Hygiene - Warning Errors

The number of broadly compliant premises for each risk rating should not exceed the number of premises with a score of 10 or less for that risk rating for Level of compliance (Hygiene)	WARNING: No. of broadly compliant premises should be less than the no. of "compliant" premises for Level of Compliance (Hygiene) at Premise Rating - A	Check the adjustments applied to the 'broadly compliant' and 'level of compliance' screens to ensure there are no inconsistencies
The number of broadly compliant premises for each risk rating should not exceed the number of premises with a score of 10 or less for that risk rating for Level of compliance (Structural)	WARNING: No. of broadly compliant premises should be less than the no. of "compliant" premises for Level of Compliance (Structural) at Premise Rating - A	Check the adjustments applied to the 'broadly compliant' and 'level of compliance' screens to ensure there are no inconsistencies
The number of broadly compliant premises for each risk rating should not exceed the number of premises with a score of 10 or less for that risk rating for Confidence in management	WARNING: No. of broadly compliant premises should be less than the no. of "compliant" premises for Confidence in Management at Premise Rating - A	Check the adjustments applied to the 'broadly compliant' and 'level of compliance' screens to ensure there are no inconsistencies
The number of premises in the Interventions carried out screen should be the same as the number in the premises profile	WARNING: The total premises for interventions carried out and the total premises in the premises profile show different figures for Manufacturers and Packers	Check that all necessary mapping has been carried out, with particular focus on 'Premises types'. Secondly check any adjustments applied to the 'premises profile' and no. of premises in the 'Interventions carried out' screen.

Food Standards - Fatal Errors

Business Rule	Example of error message	Suggested remedial action
The number of premises for each risk rating shown in the premises profile screen must be the same as those in the Level of Compliance screen	ERROR: Level of Compliance does not match the Premise Profile for Risk Rating value B	Check that all necessary mapping has been carried out, with particular focus on 'Premises types'. Secondly check any adjustments applied to the 'premises profile' and 'Level of Compliance' screens
The number of premises for each risk rating shown in the premises profile screen must be the same as those in the Confidence in management screen	ERROR: CoP - Confidence in management does not match the Premise Profile for Risk Rating value B	Check that all necessary mapping has been carried out, with particular focus on 'Premises types'. Secondly check any adjustments applied to the 'premises profile' and 'Level of Compliance' screens
The number of interventions shown on the screen 'Interventions carried out' must be equal to the number shown on the 'Due interventions' screen	ERROR: The total number of interventions shown by risk rating and the total number of interventions achieved by premise type show different figures	Check that all necessary mapping has been carried out, with particular focus on 'Intervention types'. Secondly check any adjustments applied to the 'premises profile' and 'Level of Compliance' screens
The number of broadly compliant premises (broadly compliant premises screen) in each risk rating must be less than or equal to the number of premises in that risk rating	ERROR: The number of Broadly Compliant premises should be fewer than or equal to the Premise Profile count for Risk Rating value B	Check adjustments on the 'broadly compliant' screen and ensure that any additional broadly compliant premises are reflected by premises type in the premises profile screen

Food Standards - Warning Errors

The number of broadly compliant premises for each risk rating should not exceed the number of premises with a score of 10 or less for that risk rating for Level of compliance	WARNING: No. of broadly compliant premises should be less than the no. of "compliant" premises for Level of Compliance at Premise Rating - B	Check the adjustments applied to the 'broadly compliant' and 'level of compliance' screens to ensure there are no inconsistencies
The number of broadly compliant premises for each risk rating should not exceed the number of premises with a score of 10 or less for that risk rating for Confidence in management	WARNING: No. of broadly compliant premises should be less than the no. of "compliant" premises for Confidence in Management at Premise Rating - B	Check the adjustments applied to the 'broadly compliant' and 'confidence in management' screens to ensure there are no inconsistencies
The number of premises in the Interventions carried out screen should be the same as the number in the premises profile	WARNING: The total premises for interventions carried out and the total premises in the premises profile show different figures for Manufacturers and Packers	Check that all necessary mapping has been carried out, with particular focus on 'Premises types'. Secondly check any adjustments applied to the 'premises profile' and no. of premises in the 'Interventions carried out' screen.

If you receive an error for which you cannot identify the source, please contact the monitoring team via the LAEMS email address: laems@foodstandards.gsi.gov.uk giving details of the error message received.

END OF DOCUMENT