

Local Authority Enforcement Monitoring System (LAEMS)

GUIDANCE ON HOW TO MAP MONITORING CATEGORIES

Version History.

Version No.	Date	Synopsis
1.0	29/04/2008	First distribution
2.0	29/03/2011	Update to weblink

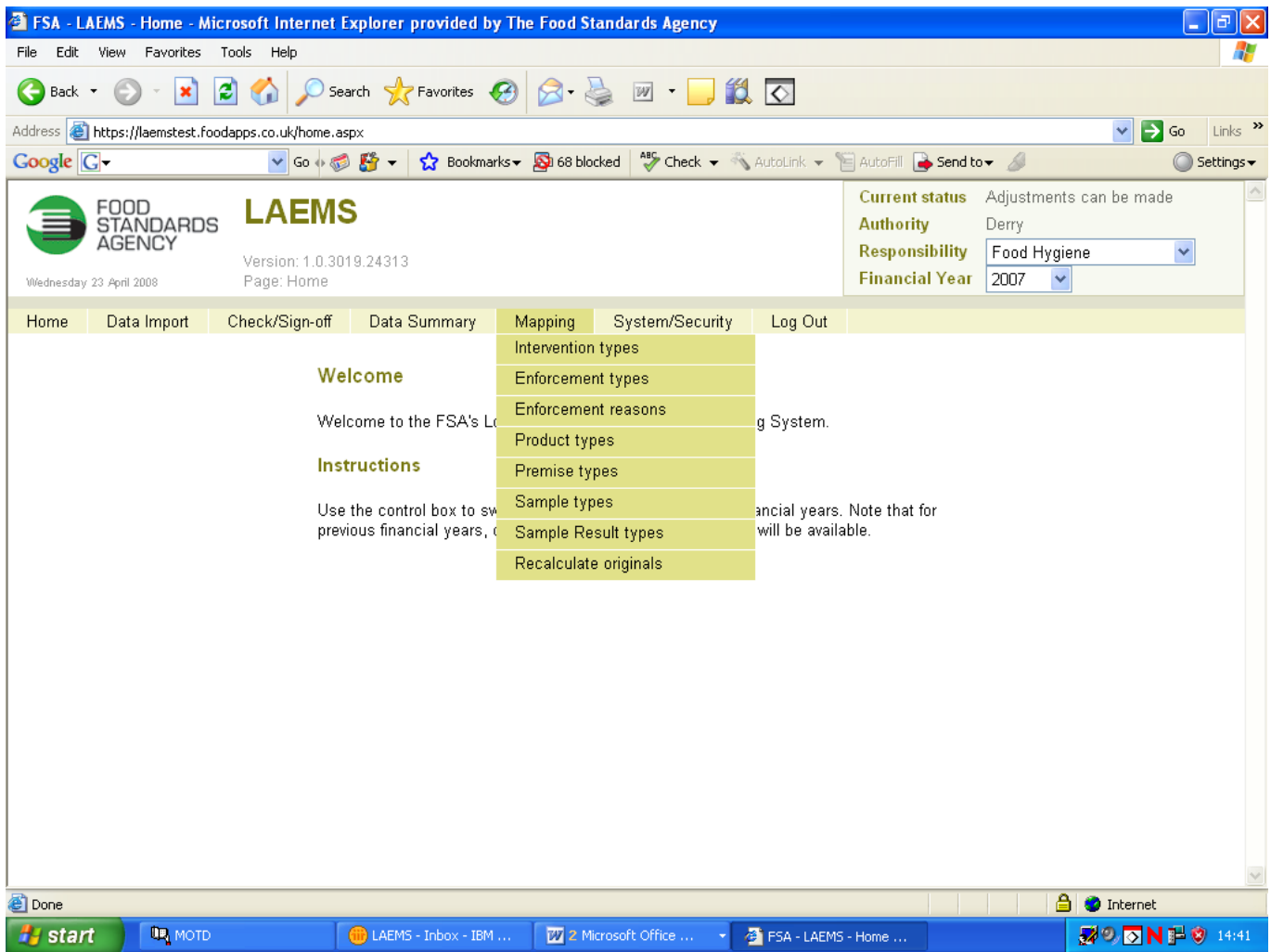
Overview

This Guidance document will explain how to ‘Map’ monitoring categories

1) Mapping to FSA Monitoring Categories.

After logging onto the new LAEMS system, you are now ready to ‘Map’ any unmatched code or category to the FSA Monitoring categories. Each LA code should map to ONLY one FSA code.

To start the mapping process, you must click on the mapping tab (see below)



LAEMS will automatically identify the codes supplied by the LA via xml, which do not match the required FSA monitoring categories. For example, the code ‘N1’, which in this example relates to ‘Eggs’ has been supplied to the FSA via the xml file.

To map this code to the required FSA code ‘Eggs’, you would simply select ‘Eggs’ from the drop-down menu to assign the LA code to the FSA code. This would then be saved by pressing the save button. As follows:

When you place the mouse over the 'Mapping' tab, it will give you a number of different options:

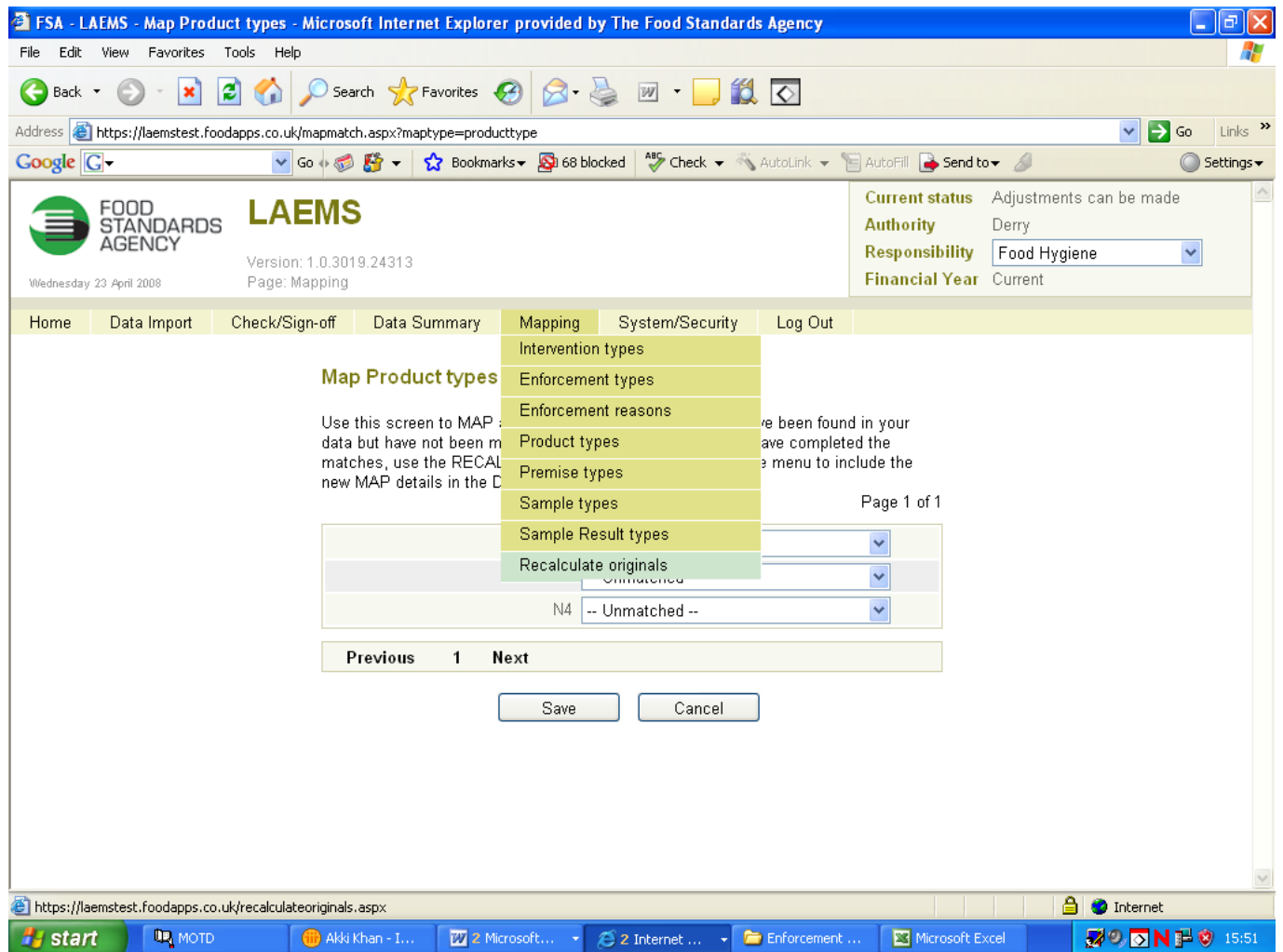
- Intervention Type
- Enforcement Type
- Enforcement Reason
- Product Type
- Premise Type
- Sample Type
- Sample Result Type
- Recalculate Originals

Guidance on the categorisations required for monitoring can be found on the FSA website at: <http://www.food.gov.uk/enforcement/auditandmonitoring/laems/definitions/>

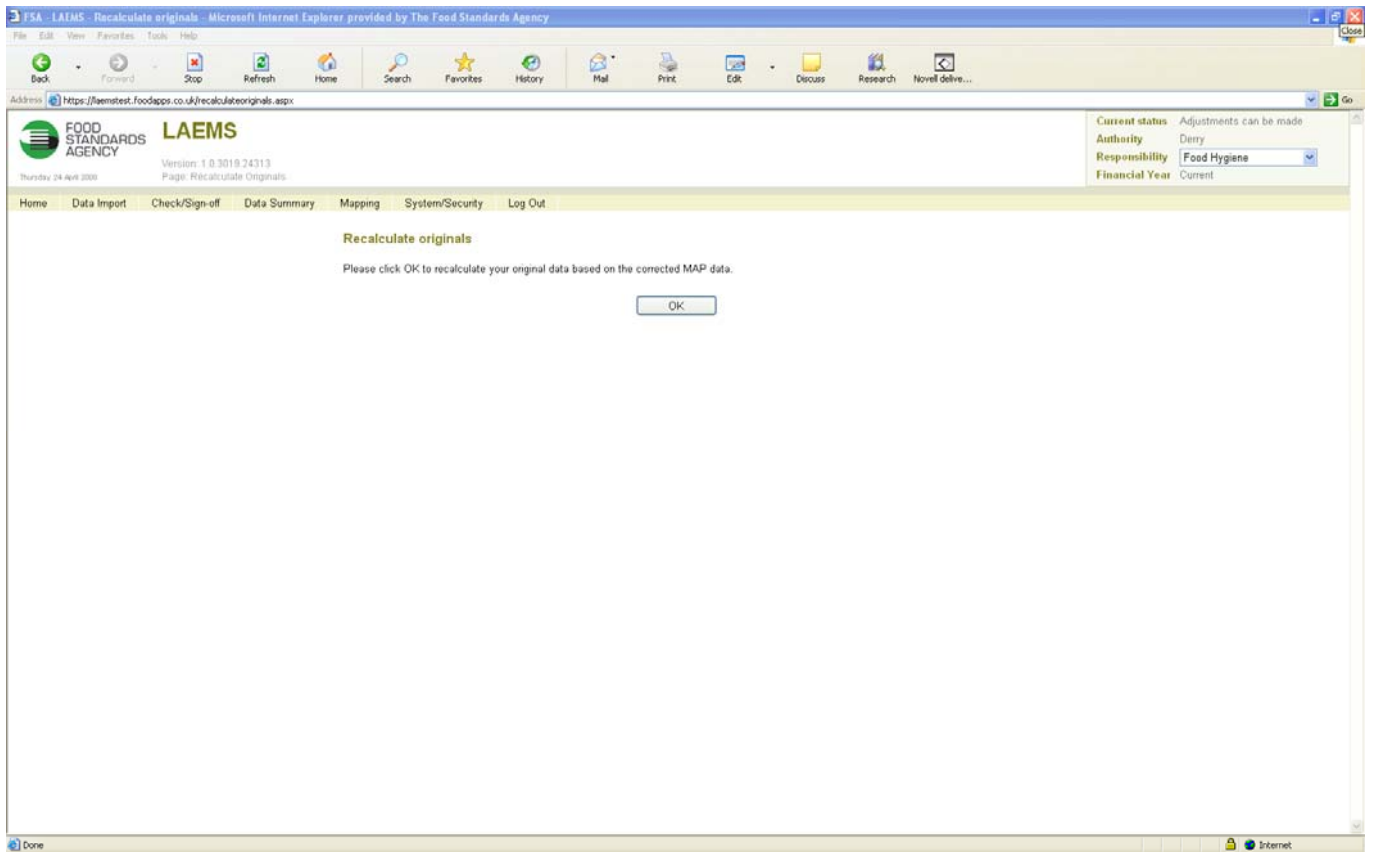
This process will need to be repeated for each of the above monitoring categories for each responsibility.

If you make an error whilst mapping, you will simply need to re-map to the correct monitoring category.

For the mapping to take effect, you need to press the ‘recalculate originals’ option from the mapping drop-down menu for the data summaries to update and reflect the mapping.



Once you have selected the ‘Recalculate originals’ option, you will be presented with the following screen:



Pressing the 'OK' button will recalculate the data in the data summaries based on the mapping carried out.

END OF DOCUMENT