



Leatherhead Deli Bar

# What's in your sandwich?

## 1. Prawn cocktail & salad sandwich



240g serving with:  
• 2 slices white bread  
• 10g Flora margarine  
• 90g prawn cocktail  
• 70g Salad

## 2. Tuna mayo & salad baguette



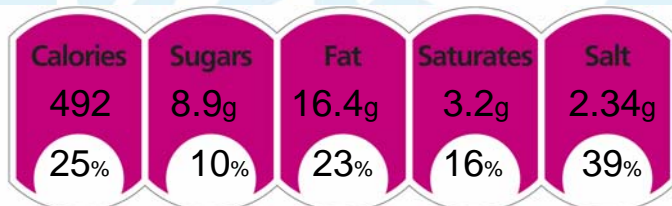
290g serving with:  
• 1 baguette  
• 10g Flora margarine  
• 90g tuna mayonnaise  
• 70g Salad

## 3. Ham & salad wholemeal sandwich



232g serving with:  
• 2 slices wholemeal bread  
• 10g Flora margarine  
• 80g sliced ham  
• 70g Salad

## 4. Egg mayo, cress & salad sesame bagel



295g serving with:  
• 1 sesame bagel  
• 100g egg, mayo & cress  
• 70g Salad